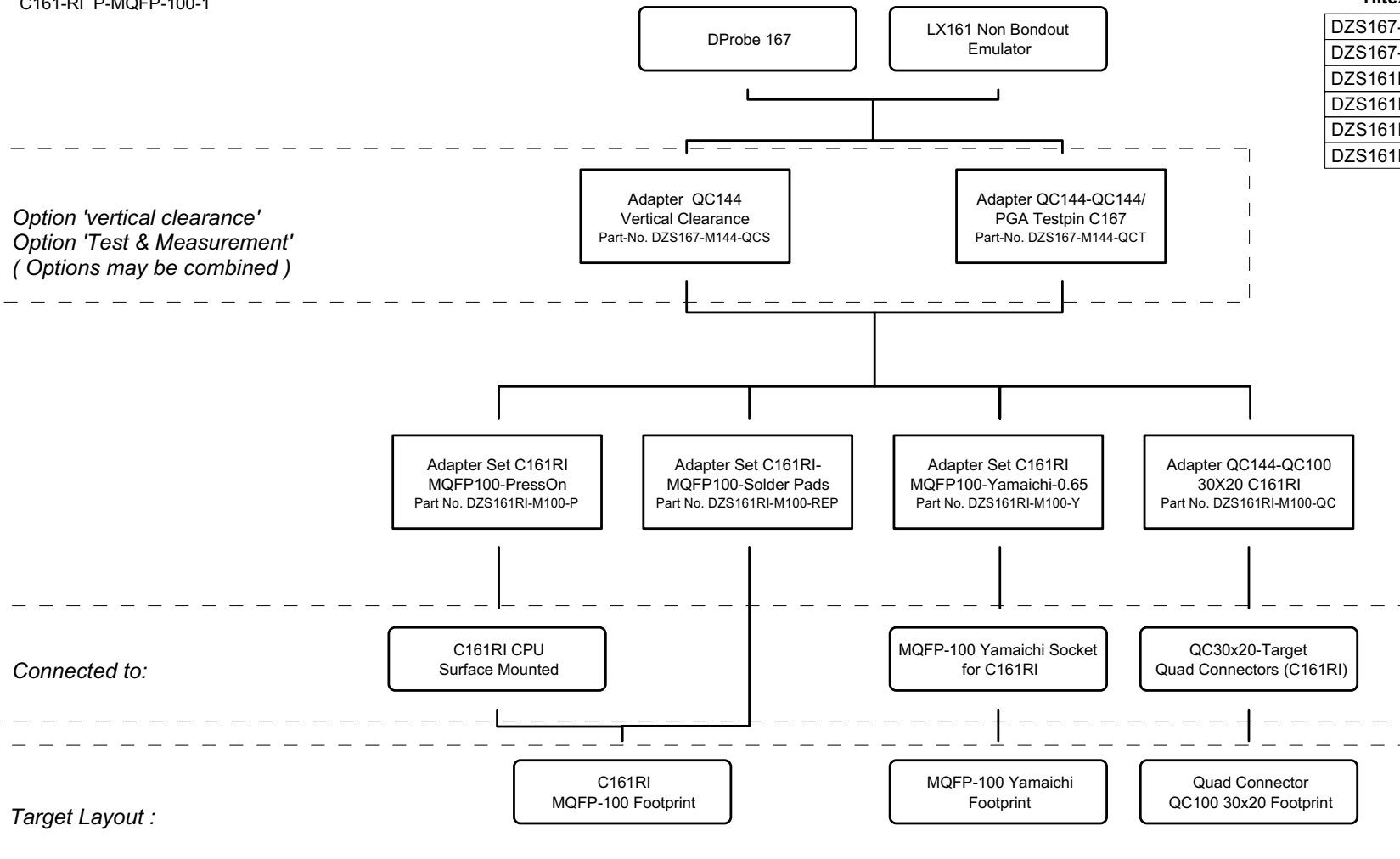


Siemens C161 RI P-MQFP-100-1

Adaptation Scheme for DProbe 167 (C161RI Support) and LX161

supported CPU-Types:
C161-RI P-MQFP-100-1

Hitex Part-No.	KE Part-No.
DZS167-M144-QVC	9-3601-2612
DZS167-M144-QCT	9-3600-2655
DZS161RI-M100-QC	9-3600-2663
DZS161RI-M100-P	1-B560-0215
DZS161RI-M100-Y	Datasheet B5600303
DZS161RI-M100-REP	Datasheet B5600304



Note 1: Target CPU is disabled by P0L1 signal