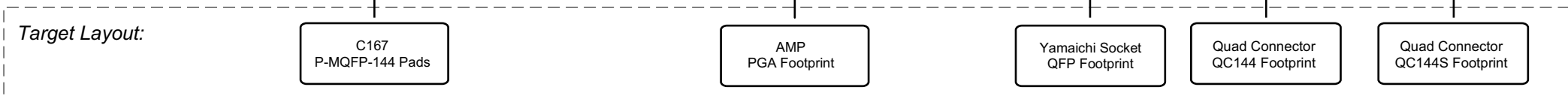
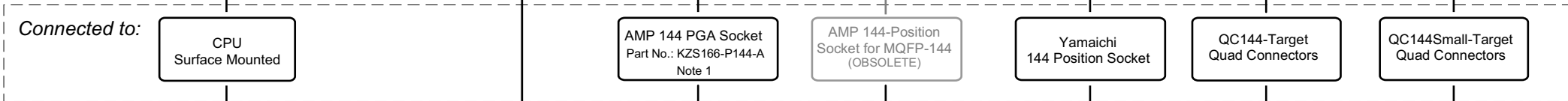
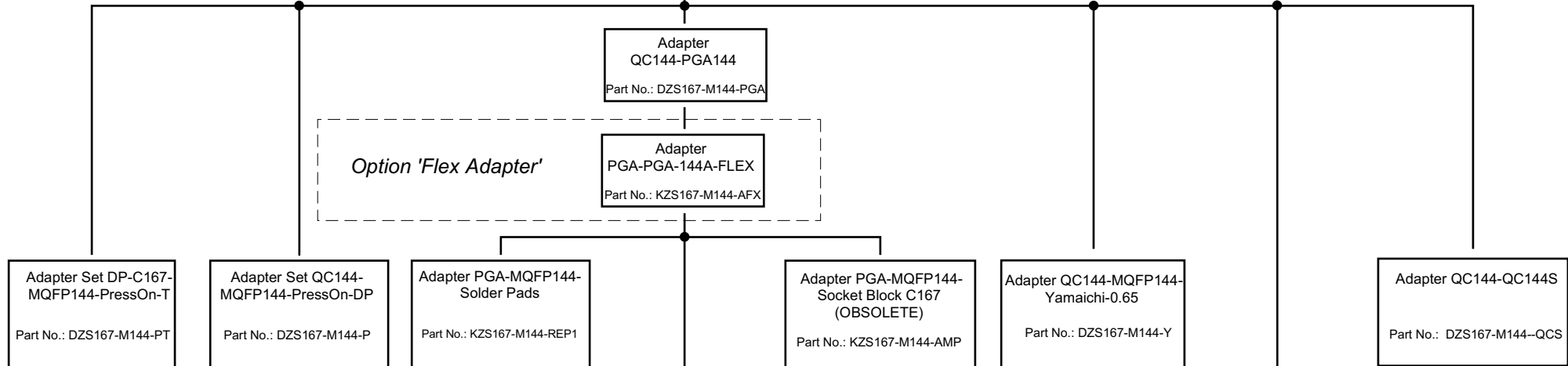
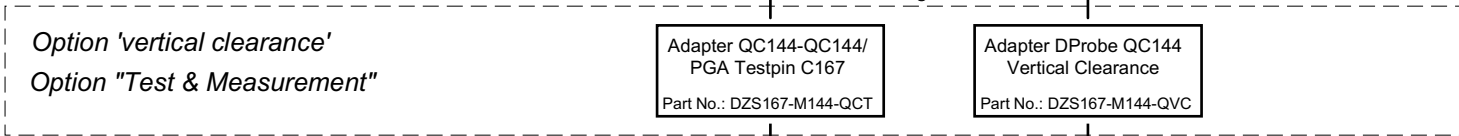


**Infineon SAB C167 P-MQFP-144-1**  
**ST Microelectronics ST10\_167/168 PQFP-144**  
**Adaptation Scheme DProbe167 / DProbeST10**

supported CPU-Types:  
 SAB C167



Note 1: original C167 CPU may be connected by insertion of a 144 pin AMP socket (AMP part number: 822114-3 and 822115-3)